

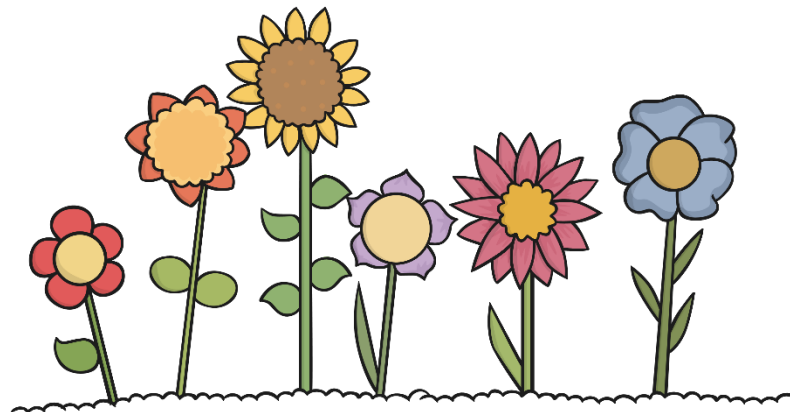
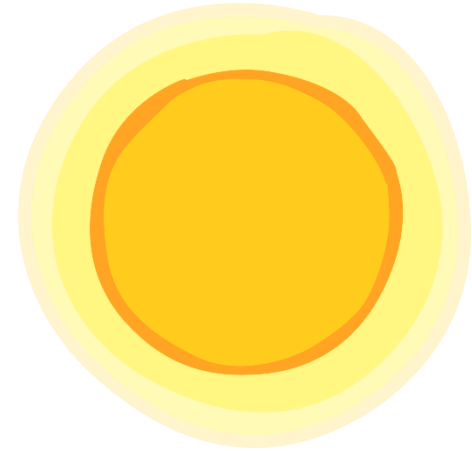
# What Plants Need to Grow



# What a Plant Needs



air  
light  
water  
nutrients  
warmth



# Why Does a Plant Need Them?



If a seed is not **warm** enough, it will not germinate.



Germination is when the seed starts to sprout into a plant.



If a plant does not have enough **light**, it will grow to be tall and flimsy as it searches for light. It will probably die.



If a plant is not **watered** enough, its stem will be fragile and have very dry leaves. It will eventually die.



# Parts of a Plant

The **leaves** use a process called **photosynthesis** to produce food for the plant. They use **light, water and carbon dioxide** to do this.



The **stem** transports water and nutrients to all parts of the plant.

The **roots** take up water and nutrients from the soil. They also keep the plant in the ground.





**REGENT STUDIES**

Focused education on life's walk

[www.regentstudies.com](http://www.regentstudies.com)